



# ROOSEVELT MIDDLE SCHOOL INTERNATIONAL BACCALAUREATE MAGNET 2022-2023

3366 Park Boulevard  
San Diego, CA 92103  
Phone 619-362-3850  
Fax 619-362-3924  
[www.sandi.net/roosevelt](http://www.sandi.net/roosevelt)

## ROOSEVELT MISSION STATEMENT

Educating internationally minded students who live and promote peace one day, peace every day.

Place student barcode  
sticker here

**STUDENT NAME** \_\_\_\_\_ **GRADE** \_\_\_\_\_

I have read and understand Roosevelt's Student policies, procedures and norms and commit to following them to the best of my ability.

Student Signature: \_\_\_\_\_

Parent Signature: \_\_\_\_\_

Date Signed: \_\_\_\_\_

Planners are an important organizational tool for success at Roosevelt.  
Los planificadores están disponibles in español en la oficina o sitio web

## DAILY BELL SCHEDULE

Regular Day

--

## Advisory Day

--

## Late Start Day

--

### Minimum Day

--

This image shows a completely blank white rectangular area. It is surrounded by a thin, solid black border that frames the entire composition. There are no markings, text, or illustrations present on the white surface.

# THE INTERNATIONAL BACCALAUREATE LEARNER PROFILE ATTRIBUTES

The aim of Roosevelt International Middle School's IB program is to develop internationally minded citizens who, recognizing their common humanity and shared guardianship of the planet, help to create a better and more peaceful world. These Learner Profile Attributes are at the center of each of our school policies and procedures at Roosevelt.

## INQUIRERS



As IB Learners we strive to..

- Nurture our curiosity
- Learn independently and with others
- Learn with enthusiasm all our life

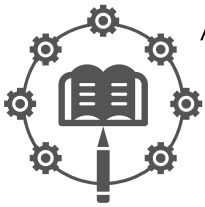
## OPEN MINDED



As IB Learners we strive to..

- Appreciate our own cultures and personal histories, as well as the traditions and values of others
- See a& evaluate a range of points of view
- Grow from our experiences

## KNOWLEDGEABLE



As IB Learners we strive to..

- Develop & use conceptual understanding to explore knowledge
- Engage with issues & ideas that are important in our lives for the whole world

## CARING



As IB Learners we strive to..

- Show empathy, compassion, and respect
- Commit to service learning
- Act to make a positive difference in lives of other and in the world

## COMMUNICATORS



As IB Learners we strive to..

- Express ourselves confidently and creatively in more than on language
- Collaborate effectively by listening carefully to the perspective of others
- Share our ideas respectfully

## RISK-TAKERS



As IB Learners we strive to..

- Work independently and cooperatively to explore new ideas
- Develop innovative strategies
- Be resourceful and resilient in the face of challenge, change & uncertainty

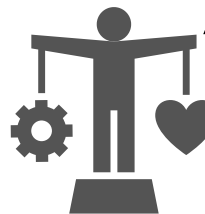
## THINKERS



As IB Learners we strive to..

- Nurture our curiosity
- Learn independently and with others
- Learn with enthusiasm all our life

## BALANCED



As IB Learners we strive to..

- Balance different aspects of our lives-intellectual, physical, and emotional
- Create well-being for ourselves and others
- Recognize our interdependence with other people and the world in which we all live

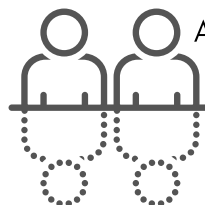
## PRINCIPLED



As IB Learners we strive to..

- Act with integrity, honesty, and a strong sense of fairness and justice for all
- Take responsibility for our actions and their consequences

## REFLECTIVE



As IB Learners we strive to..

- Consider the world, our own ideas and our experiences thoughtfully
- Understand our strengths & weaknesses in order to support our learning & personal development

# Roosevelt PRIDE “Personal Responsibility In Daily Excellence”

## STUDENT RIGHTS & RESPONSIBILITIES AND RESTORATIVE DISCIPLINE POLICY

Students contribute to a quality learning experience by **coming to class every day** with a **positive attitude, personal integrity**, and a commitment to **making good choices**.

### ROOSEVELT STUDENTS HAVE THE RIGHT TO...

- Attend a safe, welcoming school and belong to a community that values and promotes learning alongside social and emotional skill development through a positive behavior approach.
- Expect courtesy, fairness, and respect from other students and school staff members.
- Expect that all property will be safe and not damaged.
- The right to be called by chosen name and pronoun & Non-disclosure of their gender identity and/or sexual orientation.
- Express opinions freely through speech, assembly, petition, and other lawful means or advocate for change in any law, policy, or regulation.
- Present a concern or complaint to teachers, counselors, or the school principal if the actions, inactions, or decisions made by a school official do not seem to be in the best interest of the student, and to expect a response.

### STUDENT RESPONSIBILITIES

Roosevelt Middle School expects students to balance expression of their rights with observance of their responsibilities. All students can demonstrate accountability by treating others fairly and following school norms & expectations.

### ROOSEVELT STUDENTS HAVE THE RESPONSIBILITY TO...

- Attend school regularly, on time, and follow assigned schedules.
- Follow classroom & school-wide policies, procedures, and processes.
- Dress appropriately for an educational environment.
- Respect the authority of staff members.
- Respect the rights and property of others.
- Respect others' beliefs and differences.
- Refrain from using words, images, or gestures that are obscene, violent, disruptive, or disrespectful.
- Resolve disputes peacefully.
- Refrain from bullying or hurting other students.
- Tell school staff members about any behavior that may cause danger to anyone.
- Request access to social, emotional, and behavioral supports when needed.

### STUDENT RIGHTS & RESPONSIBILITIES APPLY TO STUDENTS AT ALL TIMES INCLUDING...

- In school buildings
- On school grounds
- In virtual classroom environments
- On buses and other school vehicles
- At bus stops
- On the way to or returning from school
- At school and school-related activities both on and off school property
- Off school property and outside school hours if the conduct is detrimental to the school, adversely affects school discipline, or results in a criminal charge or conviction.

### WE ARE A RESTORATIVE SCHOOL COMMUNITY...

- We are characterized by a mindset that promotes positive interactions
- We build on our collective assets
- We provide effective solution-focused approaches that nurtures our skills as both youth and adults
- We work to cultivate the overall wellness of all our members
- We maximize student learning within every interaction to teach students the behavior, social, and emotional skills needed to be successful in schools and in life
- Our school is a positive place to learn, to make mistakes, and to explore new ideas.
- We learn to collaborate, develop empathy for others, manage and express our emotions and behaviors in healthy ways, and take responsibility for our actions.
- We are always developing our skills including self-awareness, self-management, social-awareness, relationship skills, and responsible decision-making.
- Possible Restorative Interventions may include: Restorative conference with teachers, students and/or parents, making up time lost during a free time, cleaning or repairing damage done, classes or workshops pertaining to the offense etc.
- If Restorative Interventions do not prove to support a student with responsible behaviors, then other consequences such as detention, in school suspension, or out of school suspension may be considered.

# **Roosevelt PRIDE “Personal Responsibility In Daily Excellence”**

## **STUDENT RIGHTS & RESPONSIBILITIES AND RESTORATIVE DISCIPLINE POLICY**

### **RESPONSIBLE USE OF ELECTRONICS**

#### **SCHOOL PROVIDED ELECTRONIC RESOURCE GUIDELINES & EXPECTATIONS:**

- Students need to take good care of the school’s electronic resources as well as their own and others’.
- Students may not touch the electronic device belonging to or being used by another student.
- Computer and email account passwords are confidential. Each user is responsible for all uses and contents of their own computer. Giving out personal passwords, access codes, or login procedures, as well as misrepresenting one’s identity in electronic communications, is not permitted.
- Students need to check their Roosevelt email accounts and Google Classrooms daily, reading and responding to email and messages from teachers in a polite and timely fashion.

#### **PERSONAL ELECTRONICS GUIDELINES & EXPECTATIONS:**

- If a student chooses to bring personal electronic device to school, they are solely responsible for their safety and functioning.
- Teachers may allow the use of cell/smart phones in their classrooms for academic purposes, but only when explicitly stated; It is a teacher’s discretion whether to allow the use of personal electronics in their class.
- If a student uses an electronic device with permission and abuses that privilege, that privilege may be suspended.
- During regular school hours (Monday-Friday, 8:30 a.m.-3:15 p.m.), students are not permitted to use personal electronic devices, for recreation while on school campus.
- Smart Phones should be put away and not visible during passing periods and lunch
- If a student needs to use a phone during the school day, they may ask a teacher or staff member for permission to use their personal device or use the phone in the main office.
- Parents may call the main office if they need to contact their child during the school day.

Students may not photograph, record or videotape students, teachers or visitors without explicit permission.

### **MIS-USE OF ELECTRONICS**

- Students may be asked to put away/shut down their device as directed by a staff member.
- Students may be asked to lock up the device in secured lockers in the main office.
- If mis-use continues, staff member may confiscate the device and may return the device...
  - At the end of the period directly to the student.
  - At the end of the day directly to the student.
  - At the end of the day with a parent conference.
- Students may also be expected to lock up their device daily until they are able to use the device in a responsible manner.

#### **DIGITAL IMPRINTS AND STUDENTS RIGHTS & RESPONSIBILITIES:**

- Roosevelt students are reminded that all electronic interactions leave a permanent trail that reflects the nature of one’s activities and character.
- While off campus (or outside of Roosevelt’s network), students are also expected to exercise responsible behavior online.
- Any inappropriate behavior, references, photographs and/or language is in violation of Roosevelt’s expectations and student’s responsibilities
- Build an online image depicting you at your best (i.e., the you that you want your parents, grandparents, school administrators, and future schools and employers to know)
- Create an online image of yourself that reflects your good work and actions
- Always treat others with respect
- Ensure that your privacy settings on social media are set up so that you know who is seeing your posts

# Roosevelt PRIDE “Personal Responsibility In Daily Excellence”

## STUDENT RIGHTS & RESPONSIBILITIES AND RESTORATIVE DISCIPLINE POLICY

### OUR DRESS POLICY

#### OUR VALUES

- Showing school spirit, which can be done through the optional wearing of Roosevelt Spirit Wear.
- All students should be able to dress comfortably and appropriately for school and engage in the educational environment without fear of or actual unnecessary discipline or body shaming.
- All students and staff should understand that they are responsible for managing their own personal distractions without regulating individual students' clothing/self expression.
- Student dress code enforcement should not result in unnecessary barriers to school attendance.
- School staff should be trained and able to use student/body-positive language to explain the code and to address code violations.
- Teachers should focus on teaching without the additional and often uncomfortable burden of dress code enforcement.
- Reasons for conflict and inconsistent and/or inequitable discipline should be minimized whenever possible.

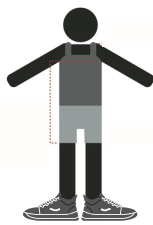
#### OUR STUDENT DRESS CODE IS DESIGNED TO ACCOMPLISH SEVERAL GOALS. THEY ARE TO...

- Maintain a safe learning environment in classes where protective or supportive clothing is needed, such as science (eye or body protection), or PE (athletic attire/shoes: see PHE Dress Requirements).
- Allow students to wear clothing of their choice that is comfortable and expresses their self-identified gender.
- Allow students to wear religious attire without fear of discipline or discrimination.
- Prevent students from wearing clothing or accessories with offensive images or language, including profanity, hate speech, and pornography.
- Prevent students from wearing clothing or accessories that denote, suggest, display or reference alcohol, drugs or related paraphernalia or other illegal conduct or activities.
- Prevent students from wearing clothing or accessories that will interfere with the operation of the school, disrupt the educational process, invade the rights of others, or create a reasonably foreseeable risk of such interference or invasion of rights.
- Prevent students from wearing clothing or accessories that reasonably can be construed as being or including content that is racist, lewd, vulgar or obscene, or that reasonably can be construed as containing fighting words, speech that incites others to imminent lawless action, defamatory speech, or threats to others.
- Ensure that all students are treated equitably regardless of race, sex, gender identity, gender expression, sexual orientation, ethnicity, religion, cultural observance, household income or body type/size.

#### THE BASIC PRINCIPLE... **Certain body parts, including, chest, midsection and buttocks, must be covered for all students at all times. All items listed in the must wear category in this policy must meet this basic principle.**

##### STUDENTS MUST WEAR...

- A Shirt (with sleeves or straps, fabric in the front, back, and on the sides under the arms that reach to the top of their pants/shorts/skirt)
- Pants/shorts/skirts or the equivalent (for example, sweatpants, leggings, a dress) that covers the entire buttocks area
- AND closed toe shoes



##### STUDENTS CANNOT WEAR...

- Violent language or images, including images of weapons
- Images or language depicting/suggesting drugs, alcohol, vaping or paraphernalia (or any illegal item or activity).
- Bullet proof vest, body armour, tactical gear, or facsimile.
- Hate speech, profanity, pornography.
- Images or language that creates a hostile or intimidating environment based on any protected class or consistently marginalized groups.
- Any clothing that reveals visible undergarments
- Swimsuits
- Accessories that could be considered dangerous or could be used as a weapon.

#### HATS AND HEADWEAR...

- With exceptions made for religious purposes, hats and other headwear must allow the face to be visible and not interfere with the line of sight to any student or staff.
- Hoodies, hats and headwear must allow the student's face and ears to be visible to staff.
- Students may be required to remove their hat or hoodie in the classroom.

#### IF IN VIOLATION OF OF THE DRESS POLICY...

- Staff will have a conversation with students regarding the violation
- If violations continue...
- Students will be asked to put on their own alternative clothing, if already available at school, to be dressed more to policy for the remainder of the day.
- Students will be provided with temporary school clothing to be dressed more to policy for the remainder of the day.
- If necessary, students' parents may be called during the school day to bring alternative clothing for the student to wear for the remainder of the day.

# **Roosevelt PRIDE “Personal Responsibility In Daily Excellence”**

## **STUDENT RIGHTS & RESPONSIBILITIES AND RESTORATIVE DISCIPLINE POLICY**

### **MOVING AROUND CAMPUS SAFETY NORMS**

#### **BEFORE SCHOOL**

- Please follow crosswalks and safety traffic lights
- Campus gates open 15 minutes before school start time
- Place/Secure bikes and skateboards in the appropriate areas
- Stay within the Blue Line Boundary heading into the Bungalows
- Put away personal electronic devices for the day

#### **DURING PASSING PERIOD**

- Please walk directly to class
- Keep personal electronic devices put away about of sight
- If you are running late from your last class, ask your teacher for a pass

#### **DURING NUTRITION BREAK & LUNCH**

- Be courteous and wait your turn in the cafeteria & cart lines
  - Just because you're bigger than someone means you can go in front of them!
- Be nice to our cafeteria staff...they are feeding you!
- Be aware of the “Blue Lines” and stay within the boundaries
- Stay out of the planters
- Throw away your trash; please don't wait for someone to pick up after you!
- Play & run only on the black top after you finish your lunch

#### **PLAYING & GAMES DURING LUNCH**

- Keep tag and all running games for the black top
- When using the equipment, please be sure to properly check it in and out
- Be aware of others around you and have fun!

#### **AFTER SCHOOL**

- Be aware of traffic and cross the streets only at crosswalks
- Save riding your bikes and boards for when you are off campus
- Please don't climb our trees out front, we want to keep them and you safe!
- Go home, to your bus, or after school activities immediately following the bell
- Be Safe!!

#### **SCHOOL SAFETY**

- Students have an active role in creating a safe school environment at Roosevelt. To ensure the safety of all students, we ask every Roosevelt student to pledge to:
  - Report immediately to an adult if you have knowledge of a student bringing a weapon or drugs to campus.
  - Report immediately to an adult if you have knowledge of a student planning to harm him/herself or others (for example, suicide or fights after school).
  - Never threaten, put down, push, hit or otherwise harm fellow students.
  - No bullying on our campus! Keep your hands to yourself.
  - If you see something, say something.

**REPORT ANYTHING ANONYMOUSLY HERE... [HTTPS://TINYURL.COM/RIMSTIPS](https://tinyurl.com/rimstips)**





# Roosevelt PRIDE "Personal Responsibility In Daily Excellence"

## ATTENDANCE & TARDY POLICY

Good attendance will help to promote academic success for you not only in Middle School but in High School, and college. Here are some tips to help you keep positive attendance.

- You can suffer academically if you miss 10 percent of the school year or about 18 days. That can be just one day every two weeks, and that can happen before you know it!
- Families should avoid extended vacations that require your children to miss school. Try to line up vacations with the school's schedule. The same goes for doctor's appointments.
- Set a regular bedtime and morning routine for easier and less stressful mornings.
- Make sure they get 8 to 10 hours of sleep.
- Make sure that when the lights go out, so do the cell phones, video games, and computers.
- Get to know our teachers and administrators; school staff can help you stay on top of academic progress

### TO REPORT AN ABSENCE

- Any absence not cleared and verified within 5 days becomes an unexcused absence. Students with excessive absences (illness, excused, unexcused, truancy) may be required to attend our Saturday Core Academy to make up lost instructional time.
- Students who will be absent from school for 3 or more days (including the need to quarantine) should obtain a Contract for Independent Study from the Attendance Office and will be expected to follow along with their coursework asynchronously via google classrooms.
- Report an absence by calling **(619) 362-3850** or by using the "Report an Absence" link on the school website: **[roosevelt.sandiegounified.org/](https://roosevelt.sandiegounified.org/)**

### TARDINESS

- Our school-wide expectation is for students to arrive on time to each class they attend. The behavior of being tardy has an adverse effect on the classroom environment and student learning.
- As soon as our doors open at 8:15, all Roosevelt students are allotted 15 minutes each morning to arrive at their first period class on time.
- Throughout the school day, all areas of our school building are able to be navigated within the 5 minutes allocated between class periods.
- When students accumulate more than 6 tardies, they will be expected to clear them at Saturday Core Academy.

### SATURDAY CORE ACADEMY

- Students may clear one full day absence and/or 8 tardies
- Students must be registered to attend:
  - **[tinyurl.com/RIMSCoreAcademy](https://tinyurl.com/RIMSCoreAcademy)**
- Students must arrive on time and stay for the entire 4 hours
- All behavior expectations remain the same as a regular school day; if students struggle to follow these expectations, they may be sent home with no credit.



# Roosevelt PRIDE "Personal Responsibility In Daily Excellence"

## GENERAL SCHOOL POLICIES, PROCEDURES & INFORMATION

### ACADEMIC INTEGRITY

Principled behavior is expected of all students. Cheating, falsification, unauthorized collaboration, plagiarism, forgery, or theft can result in failing grades, or other discipline.

### BULLYING DISTRICT POLICY BP 51312

All students have the right to learn without being bullied or harassed. Bullying is defined as unwanted, aggressive behavior that involves a real or perceived power imbalance. We do not tolerate any student being bullied (including cyber-bullying) or intimidated in any form at school or school-related events, (including off-campus events, school-sponsored activities, school buses, any event related to school business), or outside of school hours with the intention to be carried out during any of the above. Bullying includes acts being motivated either by an actual or perceived attribute that includes but is not limited to race, religion, creed, color, marital status, parental status, veteran status, sex, sexual orientation, gender expression or identity, ancestry, national origin, ethnic group identification, age, mental or physical disability or any other distinguishing characteristic.

The first step in preventing bullying is to tell the person to stop.

If that is not effective, then tell an adult until the bullying stops. Students can also go to the counseling office to report the bullying or can report bullying using <https://tinyurl.com/RIMSTIPS>. Students can also write a statement at home and email it to their counselor or Ms. Brewer ([cbrewer@sandi.net](mailto:cbrewer@sandi.net)).

### COUNSELING OFFICE

The Counseling Office welcomes all students for academic, social/emotional, and college and career support

- **ACADEMIC:**
  - We can help you manage test anxiety, establish study skills, get organized, provide tutoring information, and work with you to create a plan to improve your grades. We can also help with planning what classes you want to take for the next semester.
- **COLLEGE/CAREER:**
  - We can get you thinking about College and Career at the middle school level by completing Xello lessons, working with you to do 6-year graduation planning, and explain high school A-G requirements.
- **SOCIAL/EMOTIONAL:**
  - We are here to help if you are having personal and/or friendship challenges, difficulties at home, feeling stressed out, having a personal or family crisis, or thoughts of hurting yourself. Middle school can be a tough time in general and we are here to help along the way. You are not alone!
- **FAMILY SUPPORT:**
  - We can refer students and families to our on-site therapy program, and other helpful resources in the community. We can also assist with scheduling school conferences for students who are in need of heightened support.

### EMERGENCY BELLS

When emergency bells ring or an adult communicates there is an emergency, follow all adult directions and proceed to where you have been directed in a calm and orderly fashion.

To account for your safety, we need your immediate cooperation and attention.

EMERGENCY TYPE	SIGNAL
Fire	Series of short Bells
Earthquake	Movement/Vibration of Ground
Lockdown	One Long Bell
Shelter in Place	Alternating Long Bell & Two Short Bells

### FINANCIAL OFFICE

Students may purchase uniforms and PE clothes, combination locks, and yearbooks in the Financial Office. Replacement student planners or ID cards may also be purchased and lost or damaged library books or textbooks can be paid.

The Financial Office is located in the Main Office. Acceptable forms of payment are cash, money orders and checks (payable to Roosevelt I.B. Middle School).

### LOST & FOUND

Searching for a lost item? If a good citizen has turned it in, missing clothes are located in the Main Office. Items not claimed by the end of the semester will be given to charity. Found valuables will be kept in the Main Office. If your property is lost or stolen, fill out an incident report. Forms are located in the Main Office.

# **Roosevelt PRIDE “Personal Responsibility In Daily Excellence”**

## **GENERAL SCHOOL POLICIES, PROCEDURES & INFORMATION**

### **HEALTH OFFICE**

The Health Office is open during regular school hours. Students need a pass to the Health Office, even at lunch.

Reasons to visit the Health Office are serious illness, bleeding, vomiting, or being injured at school.

- Health problems: Parents must inform the Health Office as soon as possible if their student has a serious health problem such as diabetes, epilepsy, asthma, and severe allergies requiring Epi. Please contact the nurse if these problems result in being frequently absent from school.
- Medications: Students may not carry any type of medication at school, even “over the counter” medicine. For medications to be taken at school, the Health Office must have forms signed by the doctor or parent. Contact the Health Office for consent forms.
- Illness: Students should remain home for 24 hours after a fever, vomiting, diarrhea, or severe respiratory symptoms.
- PE Medical Excuse: A note from guardians will be accepted for 1–3 days. A doctor’s note is required for anything more than 3 days. Both need to be taken to the Health Office.
- Emergency Phone Numbers: Please keep current phone numbers with the Attendance Office and the Health Office. In case of an emergency more than one contact is essential. If we cannot reach a contact 911 may be called at your expense. Adults picking up a student must be on the contact list and must provide ID in each case.

### **LIBRARY MEDIA CENTER**

The library is open for students from 8:20 AM before school and during lunch. Students are welcome to use the library to read, check out books, use the library computers for schoolwork, study and play board games.

Library rules: Be respectful at all times, take care of the books, finish food and drinks outside before coming in, no cell/smart phones, use walking feet and quiet voices. Students who cannot follow these rules may lose their library privileges. Students may use the library during class if they have a signed pass from their teacher. These hours are subject to change based class visits, meetings, etc.

### **LIBRARY USE**

Students are required to bring in their planner or student ID in order to check out books. All students will receive textbooks unless a signed permission slip to use online textbooks is turned in

- Students are responsible for returning these textbooks in the same condition they were issued, or may be subject to fines for damage or replacement.
- Library books are due four weeks from the date they are checked out. If more time is needed, students may receive one renewal, unless there are other students waiting for that title.
- Students may check out up to 3 books (no more than 1 graphic novel/manga) at one time.
- There are no overdue fines, but students are expected to return books on time so other students may enjoy them. If an item is kept 4 weeks beyond its due date, it will be assumed lost and the student will be charged for replacement value.
- Students that wish to use a computer to complete an assignment during class must have the assignment written in their planner and signed by the teacher who assigned the work.
- Students should always have an independent reading book in their backpack and should read at least 30 minutes a day.

### **PHYSICAL & HEALTH EDUCATION PROGRAM**

Physical & Health Education (PHE) is a required class for all students. Students may only be excused from physical activity by a doctor’s note, and will be required to do written work instead. All students must be in the official PHE uniform daily. Coaches will assign individual lockers for storage of PHE uniforms, and it is ideal for students to have a combination lock. When you are in PHE class, you should lock up school clothes and backpacks. Backpacks, binders, jackets and other personal items are not allowed on the fields or in the PHE activity areas. When you are not in PHE, it is highly recommended you lock up your PHE clothes. Spray deodorants or perfumes are not allowed at school or in the locker room.

# **Roosevelt PRIDE “Personal Responsibility In Daily Excellence”**

## **GENERAL SCHOOL POLICIES, PROCEDURES & INFORMATION**

### **POWERSCHOOL**

Powerschool is a very important online tool for checking grades, homework, assignments, and attendance. Students will be given information at the beginning of the year to log on and check their grades. Parent log in information to create a parent account will be mailed home or can be picked up in the office. The parent account can be set up to send automatic updates on a weekly or daily basis regarding grades and attendance. It is highly recommended that students and parents check Powerschool at least once a week to monitor academic progress!

### **PROMOTION CEREMONY REQUIREMENTS FOR EIGHTH GRADERS**

Everyone wants to celebrate the success of students who have worked hard and fulfilled certain expectations for the eighth grade promotion ceremony. Roosevelt sets a high standard. Students who put forth the effort to meet the requirements listed below may participate in activities and celebrations to mark the end of the middle school experience. These include social events and the promotion ceremony itself that is held on the last day of school at Balboa Park. After the ceremony, students and their families are free to enjoy a day at the park.

This is a very special day for eighth graders, and the privilege of participating is earned by fulfilling the following requirements:

- 2.0 Academic Grade Point Average (GPA)
- 2.0 Citizenship GPA
- IB Learner with NO Suspensions (both in and out of school)
- Good attendance-Unexcused absences/truancies are cleared
- Punctual-Excessive tardies must be cleared
- All textbooks & library books returned and any fines cleared

The International Baccalaureate Community Project is a service learning project completed in year three (8th grade) of the MYP program. The community project gives students the opportunity to develop awareness of needs in various communities and address those needs through service learning. Students who complete all components of the Community Project process will also be awarded an MYP certificate of completion.

San Diego Unified School District also has certain requirements for students promoting to the ninth grade. If a student does not fulfill these requirements, he/she may be retained and would repeat the eighth grade. In early spring, counselors and teachers will inform students of promotion requirements, meet with students at risk of failing or retention, explain high school enrollment options, and communicate other information about the move to high school.

### **STUDENT STORE**

The Student Store is run by the Associated Student Body (ASB) to support fun activities throughout the year. The store sells snacks, drinks, and student supplies for cash only. The student store is open during lunch and days the store is open may vary.

### **VISITING TEACHER EXPECTATIONS**

Our visiting teachers are helping our school out by covering for our regular teachers who are not on site. It is the expectation that all visitors to our school be treated respectfully by all students. Students should be mindful that:

- You have an obligation to help a visiting teacher feel welcome and supported, and assist the teacher with any questions they may have.
- Your behavior reflects on your teacher, your school, and yourself.
- A visiting teacher is your teacher for the time that he/she is here at Roosevelt.
- The visiting teacher is in charge at all times.
- You have a responsibility to follow all directions given by the visiting teacher.
- You are responsible for completing all assignments or tasks given by the visiting teacher.



# Roosevelt PRIDE “Personal Responsibility In Daily Excellence”

## INTERNATIONAL BACCALAUREATE MIDDLE YEARS PROGRAM (IBMYP)

### INTERNATIONAL BACCALAUREATE ORGANIZATION MISSION STATEMENT

The International Baccalaureate aims to develop inquiring, knowledgeable, and caring young people who help to create a better and more peaceful world through intercultural understanding and respect.

IB programs encourage students across the world to become active, compassionate, and lifelong learners who understand that other people, with their differences, can also be right.

Life in the 21st century places many changing demands on students making the transition through adolescence. They are at a crucial period of personal, social, physical and intellectual development, of uncertainty and of questioning. The International Baccalaureate® (IB) Middle Years Programme is designed to help them find a sense of belonging in the ever changing and increasingly interrelated world around them and to foster a positive attitude to learning.

The IB Middle Years Programme provides a framework of academic challenge that encourages students to embrace and understand the connections between traditional subjects and the real world, and become critical and reflective thinkers.

The overall philosophy of the programme is expressed through three fundamental concepts that support and strengthen all areas of the curriculum. These concepts are based on:

- intercultural awareness
- holistic learning
- communication

To this end, the programme is divided into eight subject areas that integrate the **Global Contexts** while fostering the ten attributes of the **IB Learner Profile**.



# Roosevelt PRIDE "Personal Responsibility In Daily Excellence"

## INTERNATIONAL BACCALAUREATE MIDDLE YEARS PROGRAM (IBMYP)

### SCHOOL-WIDE GRADING POLICY

Learning in the IB community celebrates the many ways people work together to construct meaning and make sense of the world. Roosevelt students engage in cycles of inquiry, action and reflection that lead to deeper understanding and a lifetime of learning. Learning is the central belief, as well as the outcome, of developing purpose, culture, and environment at Roosevelt. To ensure effective and equitable access to the curriculum teachers focus on conceptual understanding, student choice and exploration of the subject in order to develop the student's own understanding of the subject.

#### MYP ASSESSMENT SCALE IB TASK: CRITERIA ACHIEVED RECORDING EQUIVALENCIES

Students and teachers use feedback to support stated outcomes and expectations. Teachers plan and design the assessment of student learning based on the criteria and procedures in accordance with the IB programme standards. The school uses specific and constructive school-based reporting to provide students and teachers with information that can be used to improve learning, teaching.

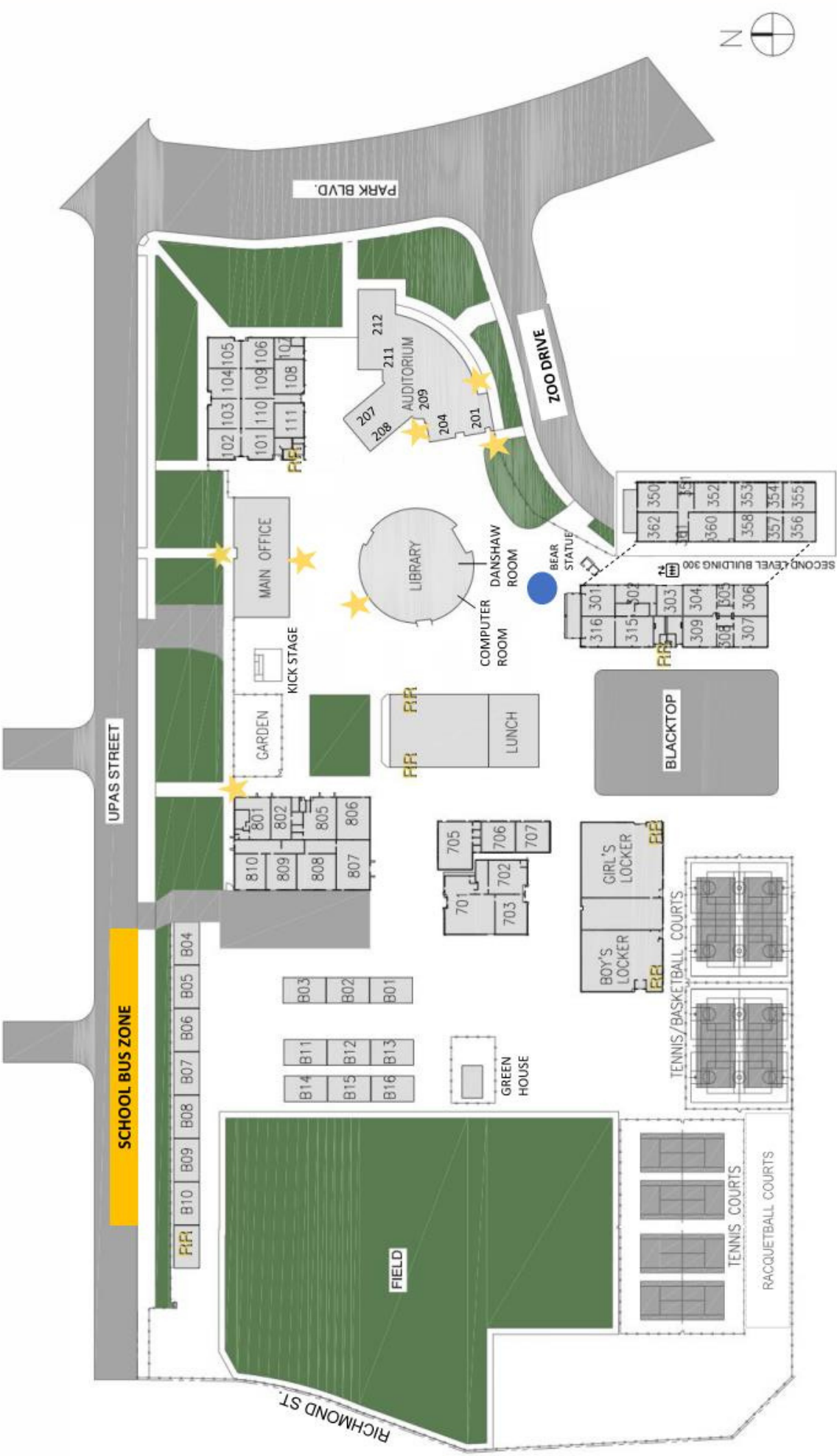
Through stakeholder decision making, we approved a school-wide grade range that is consistent across all classrooms.

IB ACHIEVEMENT LEVEL	PERCENTAGE	LETTER GRADE	RUBRIC SCALE	PROFICIENCY LEVEL
8-7	87-100%	A	4	ADVANCED
6-5	62-86%	B	3	PROFICIENT
4-3	37-61%	C	2	BASIC
2-1	25-36%	D	1	BELOW BASIC
0	0-24%	F	0	FAR BELOW BASIC

# Roosevelt PRIDE "Personal Responsibility In Daily Excellence"

## ROUGH RIDER CITIZENSHIP

	REFLECTIVE & CARING	COMMUNICATOR & INQUIRER	PRINCIPLED & BALANCED
<b>E EXCEEDS DEMONSTRATES ROUGH RIDER PRIDE AT ALL TIMES</b>	<ul style="list-style-type: none"> <li>• Always helpful and trustworthy</li> <li>• Always helpful and trustworthy</li> <li>• Always caring, respectful, cooperative, and helpful to fellow students and all teachers including substitutes</li> <li>• Always respectful of others' belongings</li> </ul>	<ul style="list-style-type: none"> <li>• Always works well in groups</li> <li>• Always shares ideas appropriately</li> <li>• Always prepared and focused in groups</li> <li>• Always participates in class discussions</li> </ul>	<ul style="list-style-type: none"> <li>• On time to class eve day</li> <li>• Follows all directions and begins work when asked</li> <li>• Doesn't make excuses for mistakes</li> <li>• Always prepared for class</li> <li>• Always in dress code</li> <li>• Always turns in assignments on time</li> <li>• Records all assignments in well-organized planner</li> <li>• Always a positive role model in class</li> </ul>
<b>M MEETS DEMONSTRATES ROUGH RIDER PRIDE MOST OF THE TIME</b>	<ul style="list-style-type: none"> <li>• Generally helpful and trustworthy</li> <li>• Mostly caring, respectful, cooperative, and helpful to fellow students and all teachers including substitutes</li> <li>• Generally respectful of others' belongings</li> </ul>	<ul style="list-style-type: none"> <li>• Generally works well in groups</li> <li>• Generally shares ideas appropriately</li> <li>• Generally on task and focused in groups</li> <li>• Generally participates in class discussions</li> </ul>	<ul style="list-style-type: none"> <li>• No more than 2 tardies in 6 weeks</li> <li>• Generally Follows all directions and begins work on time</li> <li>• Doesn't make excuses for mistakes</li> <li>• Generally prepared for class</li> <li>• Generally in dress code</li> <li>• Generally turns in assignments on time</li> <li>• Generally records as assignments in organized planner</li> <li>• Generally a positive role model in class</li> </ul>
<b>I INCONSISTENT DEMONSTRATES ROUGH RIDER PRIDE SOMETIMES</b>	<ul style="list-style-type: none"> <li>• Sometimes helpful or trustworthy</li> <li>• Occasionally caring, respectful, cooperative, and helpful to fellow students and all teachers including substitutes</li> <li>• Sometimes disrespectful of others' belongings</li> <li>• Working on being honest about effort or responsibility on work</li> </ul>	<ul style="list-style-type: none"> <li>• Occasional difficulty working in groups</li> <li>• Sometimes needs prompting to share ideas</li> <li>• Occasionally disruptive to other groups</li> <li>• Sometimes participates in class discussions</li> </ul>	<ul style="list-style-type: none"> <li>*No more than 3 tardies in 6 weeks</li> <li>• Sometimes fails to follow directions and/or begin work when asked</li> <li>• Occasionally makes excuses for mistakes</li> <li>• Sometimes unprepared for class</li> <li>• Sometimes in dress code</li> <li>• Occasionally fails to turn in assignments on time</li> <li>• Sometimes records a assignments in planner</li> <li>• Working on being a positive role model in class</li> <li>• Sometime copies homework</li> </ul>
<b>U UNSATISFACTORY DEMONSTRATES ROUGH RIDER PRIDE RARELY</b>	<ul style="list-style-type: none"> <li>• Often unhelpful or not trustworthy</li> <li>• Seldom caring, respectful, cooperative, or helpful to fellow students and/or all teachers including substitutes</li> <li>• Often disrespectful of others' belongings</li> <li>• Generally less than honest about effort or responsibility on work</li> </ul>	<ul style="list-style-type: none"> <li>• Behavior makes teaching and/or learning difficult</li> <li>• Often has difficulty working in groups</li> <li>• Often needs prompting to share ideas</li> <li>• Often disruptive to other groups</li> <li>• Rarely participates in class discussions</li> </ul>	<ul style="list-style-type: none"> <li>• More than 3 tardies in 6 weeks</li> <li>• Often fails to follow directions and/or begin work when asked</li> <li>• Often makes excuse for mistakes</li> <li>• Often unprepared for class</li> <li>• Rarely in dress code</li> <li>• Often fails to turn in assignments on time</li> <li>• Rarely records assignments in planner</li> <li>• Not a positive role model in class</li> <li>• Caught cheating or copying</li> </ul>



**ROOSEVELT  
INTERNATIONAL  
MIDDLE SCHOOL**



# CAMPUS MAP

**LEGEND:**  
 ★ Entrance  
 RR Restrooms  
 ↑↑ Elevators